

Session 1

Introductions and Ice Breaker

3

Establish context and expectations

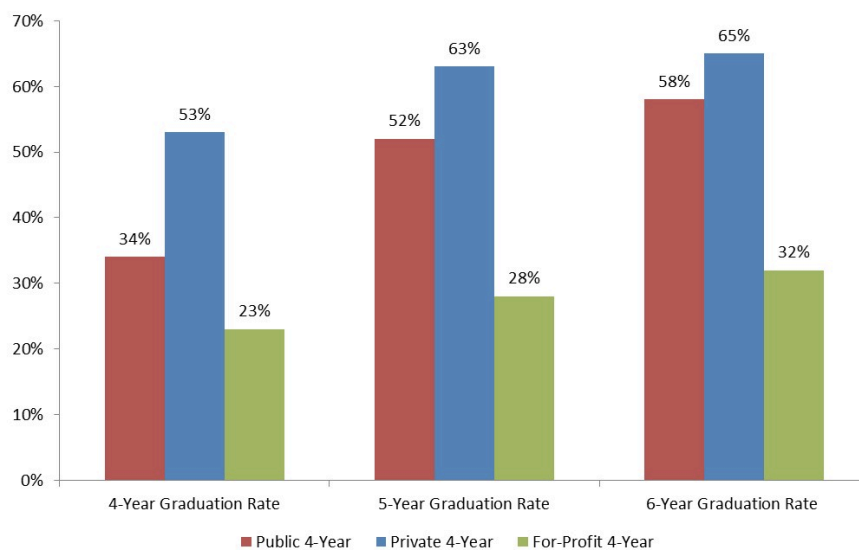
Be open and honest
Think expansively
Communication is key!

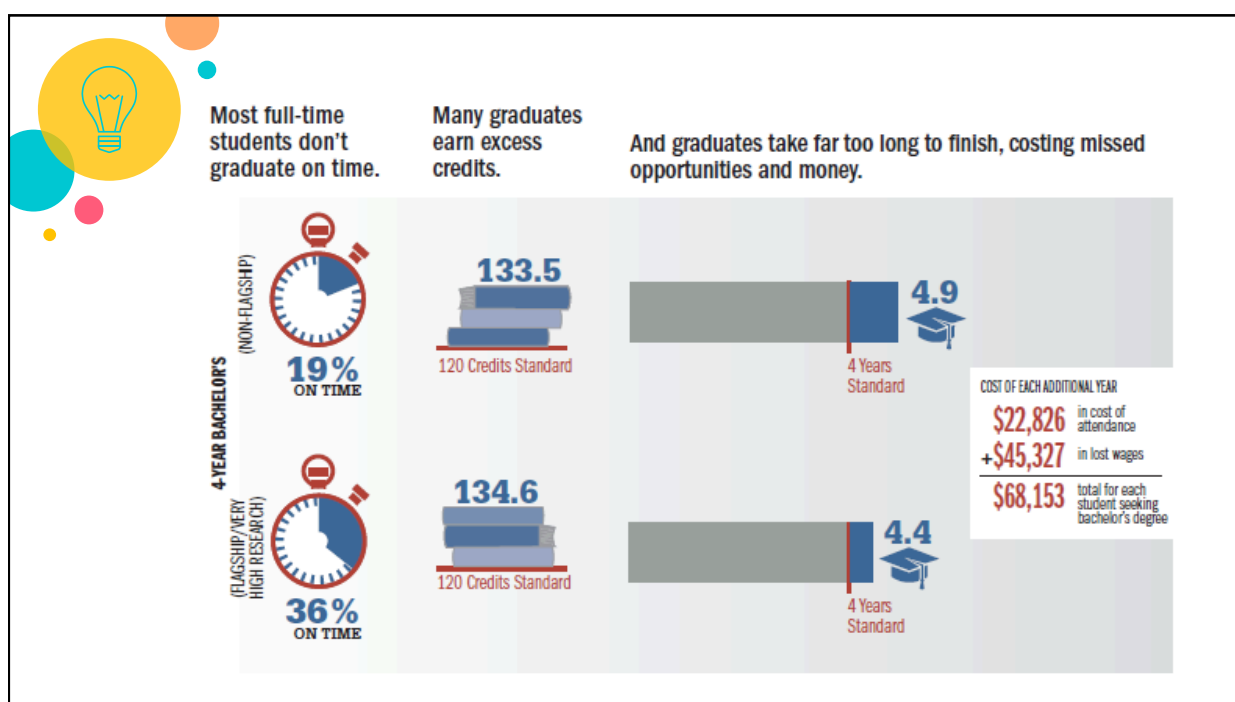
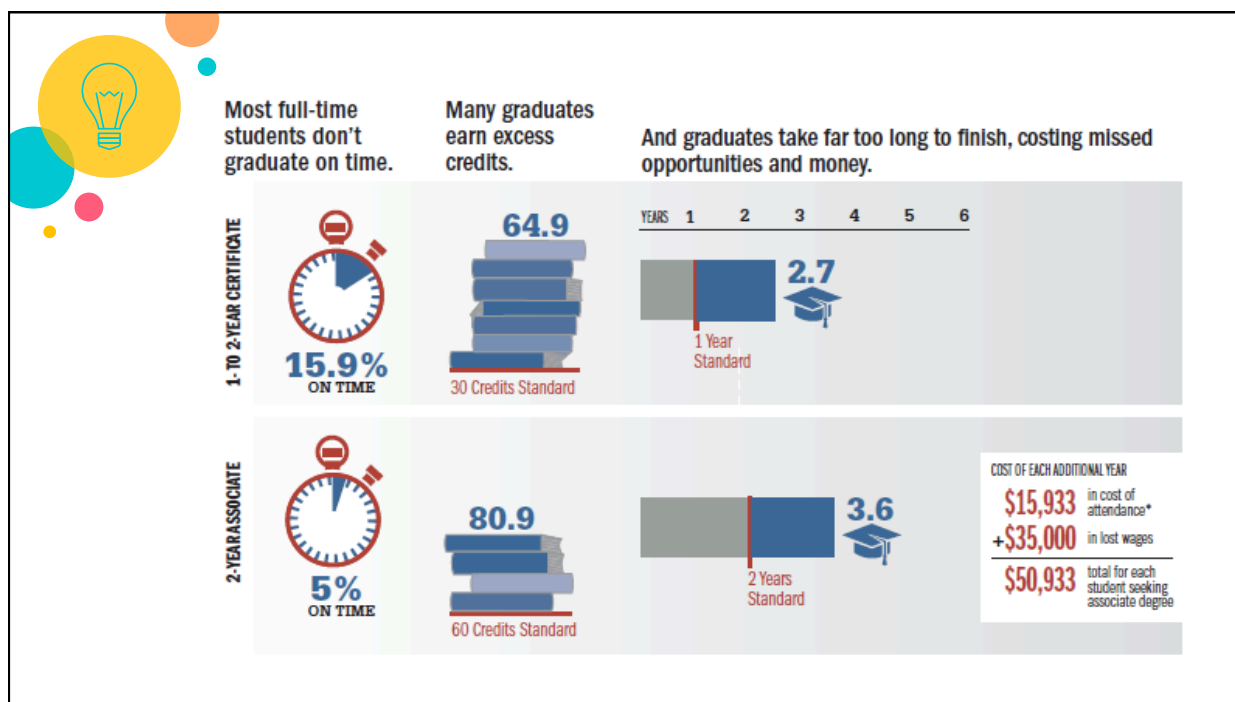
Why it is important to answer “Who Do You Think You Are”

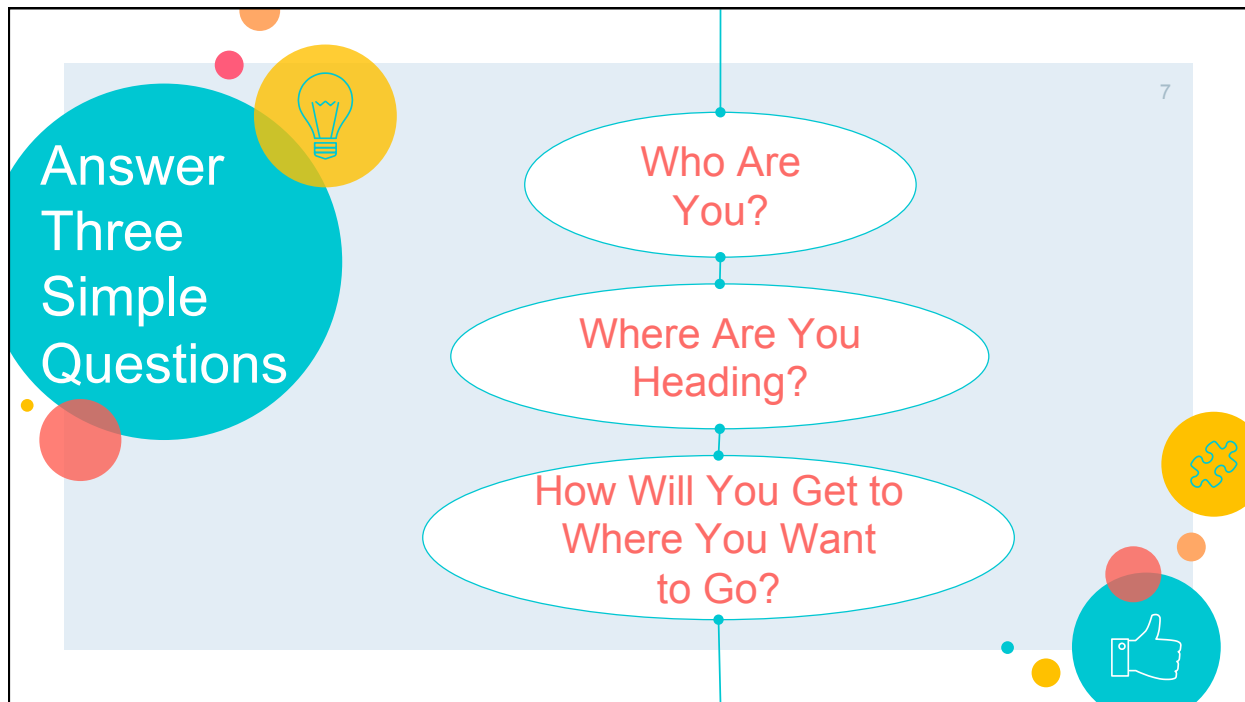
Stats on college attendance

Four-Year, Five-Year and Six-Year Graduation Rates by Institutional Type

4







Session 1

What Are Your Strengths and Interests?

9

Interests

Holland Code

Strengths

StrengthsFinder

What Do You Like to Do?

Use the themes below to find careers related to your interests.

<u>R</u> Realistic	<u>I</u> Investigative	<u>A</u> Artistic	<u>S</u> Social	<u>E</u> Enterprising	<u>C</u> Conventional
People who have athletic or mechanical ability, prefer to work with objects, machines, tools, plants or animals, or to be outdoors.	People who like to observe, learn, investigate, analyze, evaluate or solve problems.	People who have artistic, innovating or intuitional abilities and like to work in unstructured situations using their imagination and creativity.	People who like to work with people to enlighten, inform, help, train, or cure them, or are skilled with words.	People who like to work with people, influencing, persuading, performing, leading or managing for organizational goals or economic gain.	People who like to work with data, have clerical or numerical ability, carry out tasks in detail or follow through on others' instructions.

10

What are your strengths?

EXECUTING	INFLUENCING	RELATIONSHIP BUILDING	STRATEGIC THINKING
People with dominant Executing themes know how to make things happen.	People with dominant Influencing themes know how to take charge, speak up, and make sure the team is heard.	People with dominant Relationship Building themes have the ability to build strong relationships that can hold a team together and make the team greater than the sum of its parts.	People with dominant Strategic Thinking themes help teams consider what could be. They absorb and analyze information that can inform better decisions.
Achiever Arranger Belief Consistency Deliberative Discipline Focus Responsibility Restorative	Activator Command Communication Competition Maximizer Self-Assurance Significance Woo	Adaptability Connectedness Developer Empathy Harmony Includer Individualization Positivity Relator	Analytical Context Futuristic Ideation Input Intellection Learner Strategic

11

Assign Homework:

12

Session 1

Interest Inventory

O*Net Interest Profiler
Big Future

Assess Strengths

Gallup Strengths Explorer **costs
High5Test (free)
truity.com/test/personal-strengths-inventory



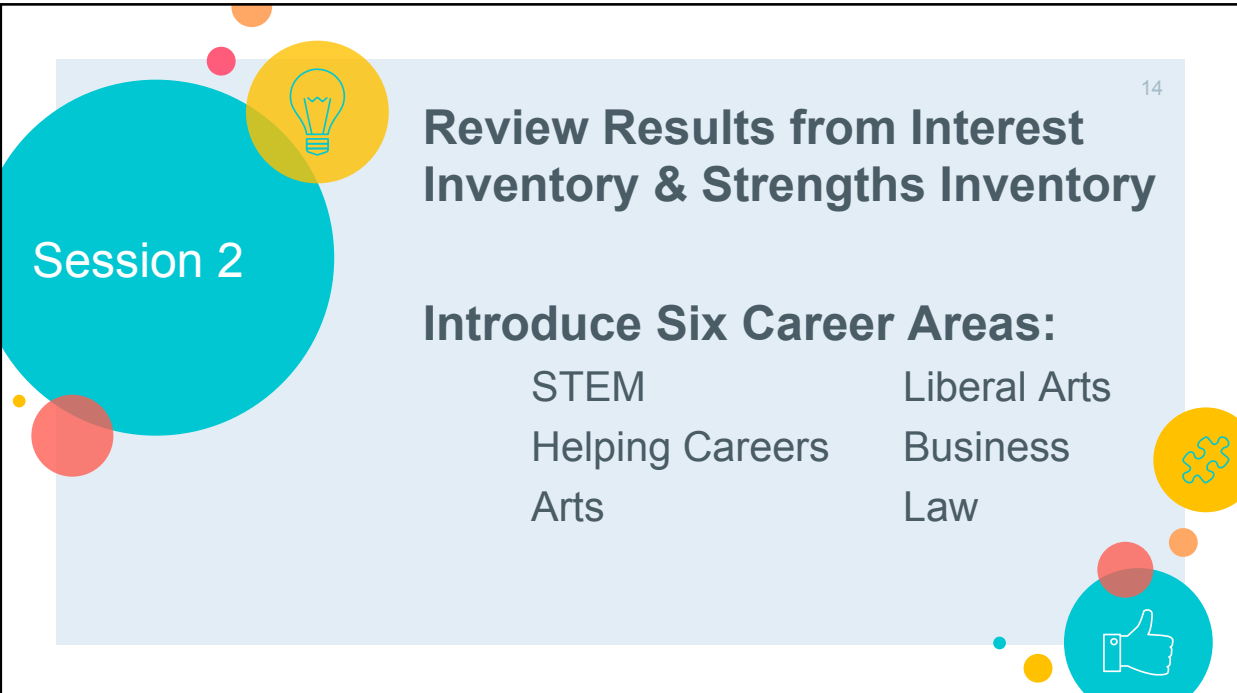
Session 2

14

Review Results from Interest Inventory & Strengths Inventory

Introduce Six Career Areas:

STEM	Liberal Arts
Helping Careers	Business
Arts	Law

The slide features a light blue background with a large teal circle on the left containing the text "Session 2". Various decorative elements are scattered around, including a yellow circle with a lightbulb icon, a red circle with a thumbs up icon, and a yellow circle with a gear icon. There are also several smaller circles in orange, pink, and red.



STEM degrees are more likely to result in higher paying starting salaries than any other area of study

Being admitted to a competitive program is just the beginning

Should enjoy advanced science and math studies

Entry-level jobs are highly competitive

Highest paying jobs are highly competitive

Seven out of ten STEM careers are related to computers- wages can vary greatly

Scientific pathway:

Often requires extensive post graduate education

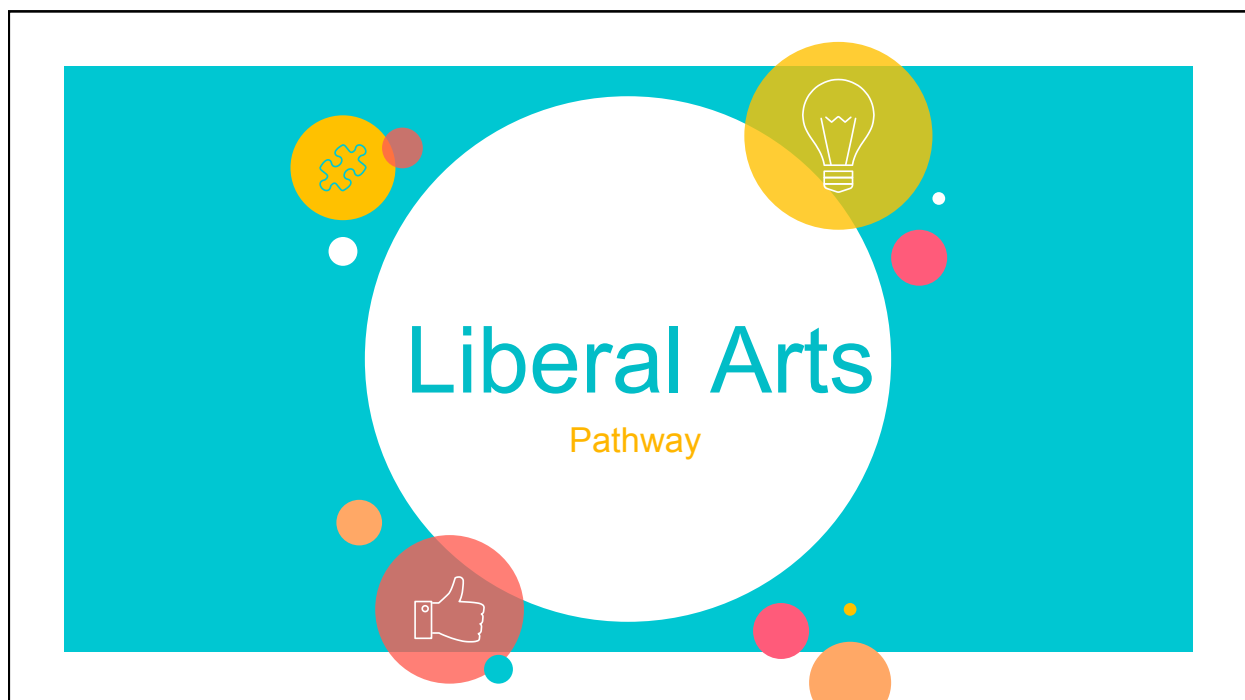
May require extensive research and/or publishing

Takes a long time to achieve career stability, salary, and work-life balance than other careers

58% of STEM graduates had moved to a career outside STEM within 10 years of graduation.

* Georgetown University Center on Education and the Workforce

Many industries recruit STEM graduates for nontechnical careers



Liberal Arts

19

Focus on general knowledge and developing intellectual capacity rather than specific job-related skills

Focus on twenty-first century skills: collaboration and teamwork, creativity and imagination, critical thinking, problem solving

Career Pathways

Liberal arts majors are employed in virtually every line of work

20

Short-Term and Long-Term Salary Outlook

Initial salaries may be lower, but over time, generally catch up with and often surpass professional or pre-professional degrees.



Helping Professions

22

Improving the emotional, intellectual, physical, or spiritual wellness of others

Educational Preparation/Continuation

Most helping careers require bachelor's degree, certifications, continuing education

Career Pathways/Growth

Difficult to advance without master's or doctorate degree

Practical Challenges

23

Job may cause stress and/or dissatisfaction
Impacted by politics, public policy, state budgets

Emotional Risks/Demands

Emotional weight
Ethical considerations



Educational Preparation

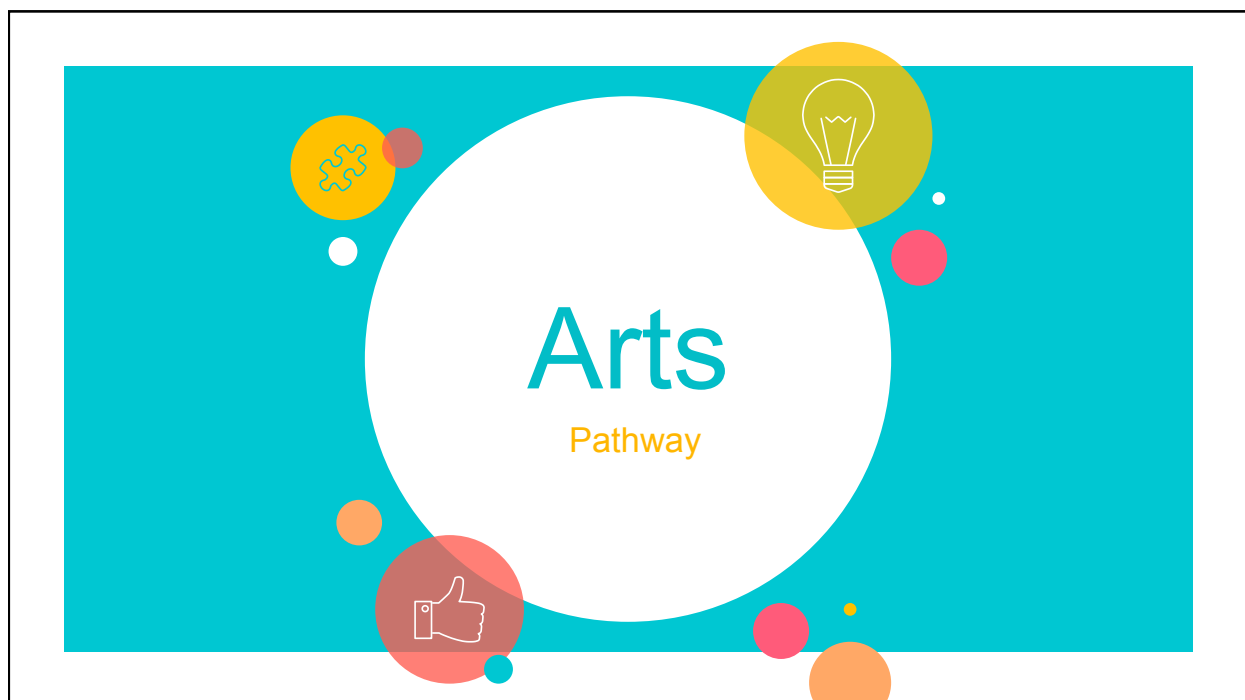
25

Importance of Early Experiences

Selling and marketing, project management, communications, managing money, creativity

Concerns about Automation

Earnings Outlook



Artists and Musicians

27

Art for the Soul or Art for the Sale

Most financial success goes to a few highly successful artists and the businesspeople who support them

Working for Others vs. Working Independently



Criminal Justice

29

Police and Investigative Work

- Educational and physical requirements

- Social/emotional concerns

Detectives

- Pathway to detective

- Demands of the job

CSI/Forensics

Law

- Declining job opportunities

- High profile jobs are highly competitive

- Demanding job

- Morality is NOT legality

Law School

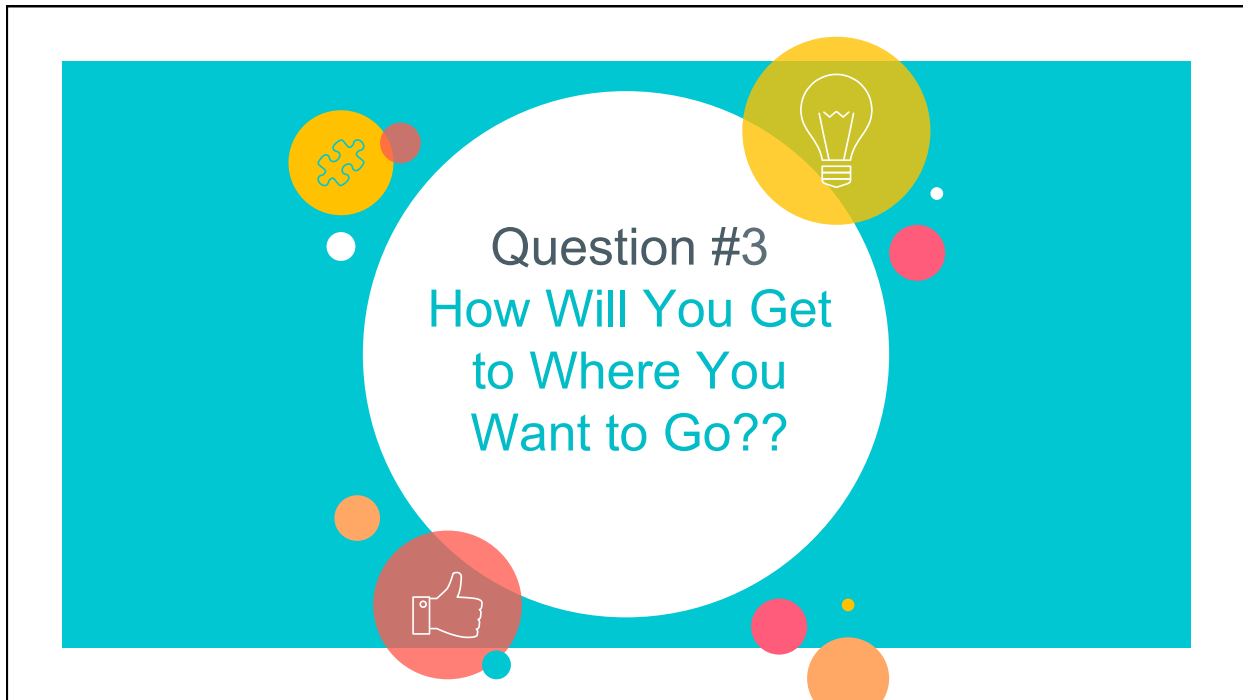
30

- Law school enrollment is competitive

- No evidence pre-law or criminal justice bachelor's degrees provide advantage when applying

- Reputation of law school can have a dramatic impact on job placement

Earnings Outlook

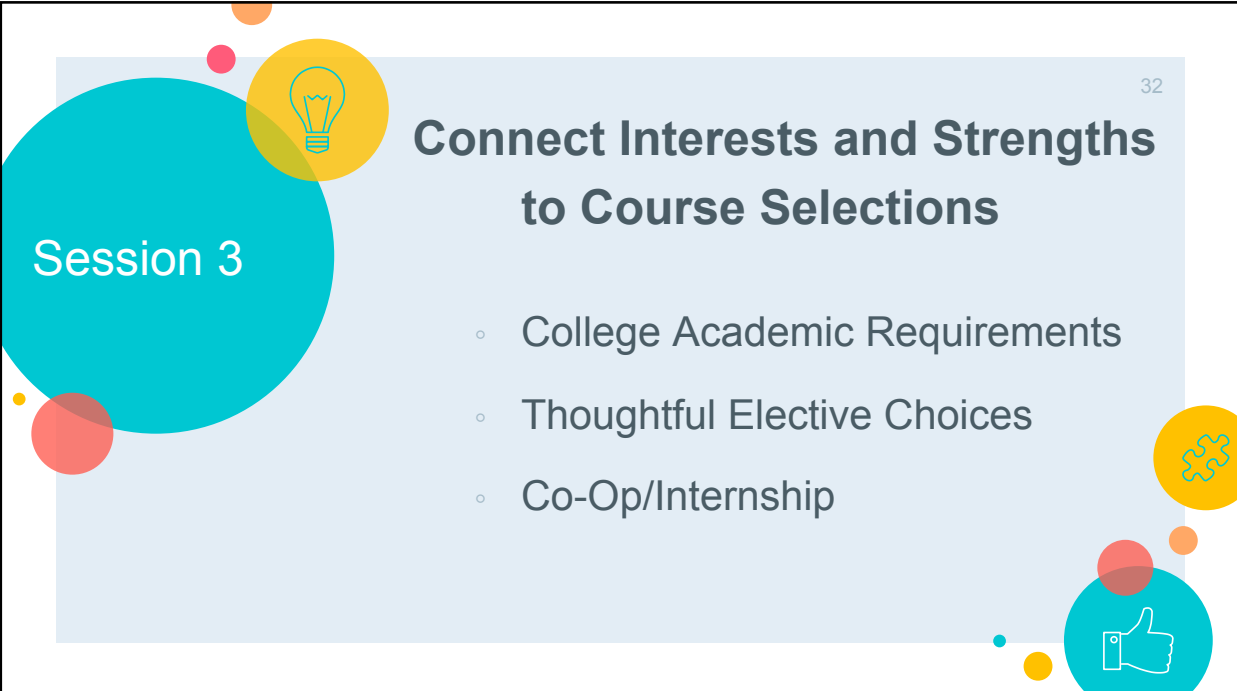


Session 3

**Connect Interests and Strengths
to Course Selections**

- College Academic Requirements
- Thoughtful Elective Choices
- Co-Op/Internship

32





Session 3

Post-Secondary Options:

Community/Junior Colleges

- Transfer vs. Career Program

4 Year Colleges

Apprenticeships

Military

33



Session 4

The REAL Price of College

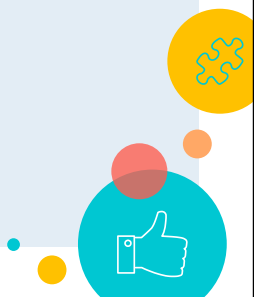
- Tuition, Fees, and Other Costs
- EFCs
- Net Price Calculators
- FAFSA4caster

34



Session 4

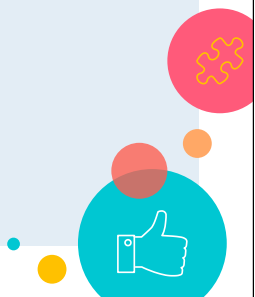
Types of College Funding:

- Financial Aid
 - Grants
 - Loans
 - Scholarships
- 

35



Time for Some Difficult Questions:

- Who Will Pay For College- And For How Long
 - Will You Work While in College
 - How Much Has Your Family Saved For College
 - How Much Can Your Family Afford
 - What are Each Parties' Responsibilities
 - What are the Expectations After College
- 

36



WHAT YOU CAN EXPECT FROM ME:



- Respect for you as an adult.
- Pay for _____% of tuition, room, board, books and fees.
- Pay for _____% of transportation to and from _____ University.
- Room & board during summers and holidays.
- Health insurance on my policy. Valued at \$_____ a year.
- To provide emergency financial support as needed within my abilities.

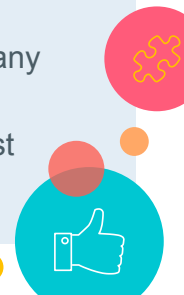
37

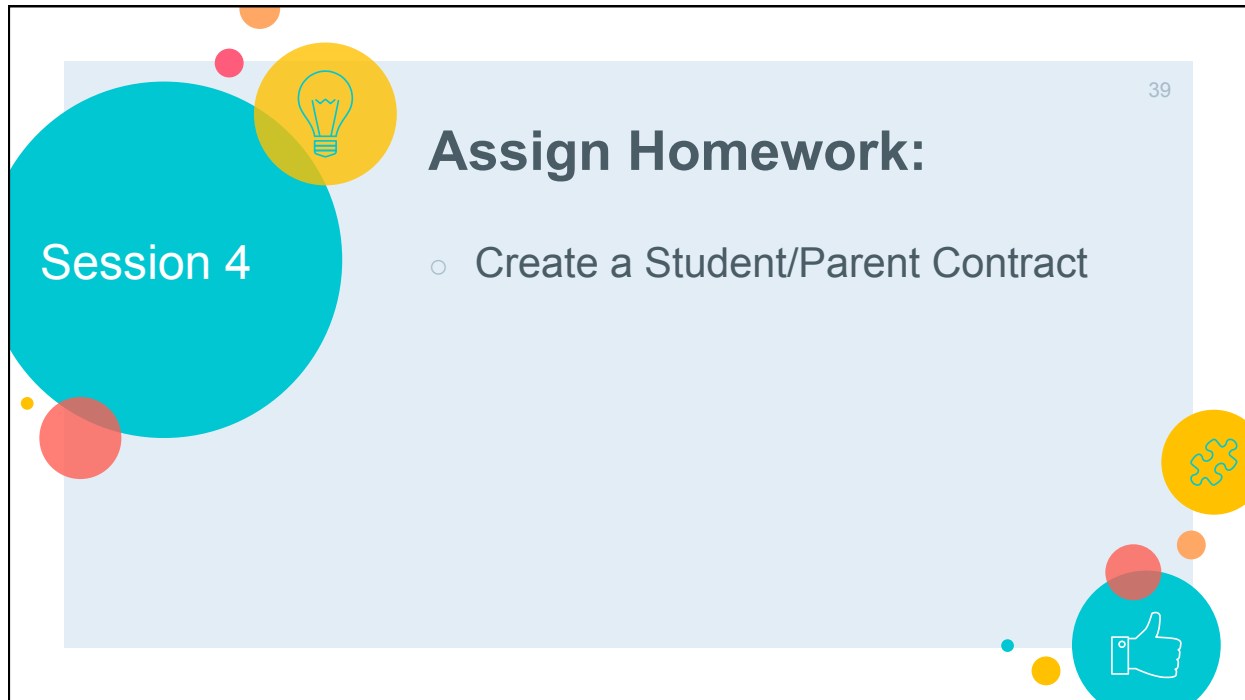


WHAT I EXPECT FROM YOU:

38

- Employment- you will need to get a part time job with the requirement of _____ hours a week not to exceed 20 hours a week during the semester.
- Graduate from _____ University in four years
- Manage your money wisely and do not assume credit without consulting me.
- Should you drop a class you will be responsible to pay for any replacement class.
- If living at home the following chores will be completed: (List chores)





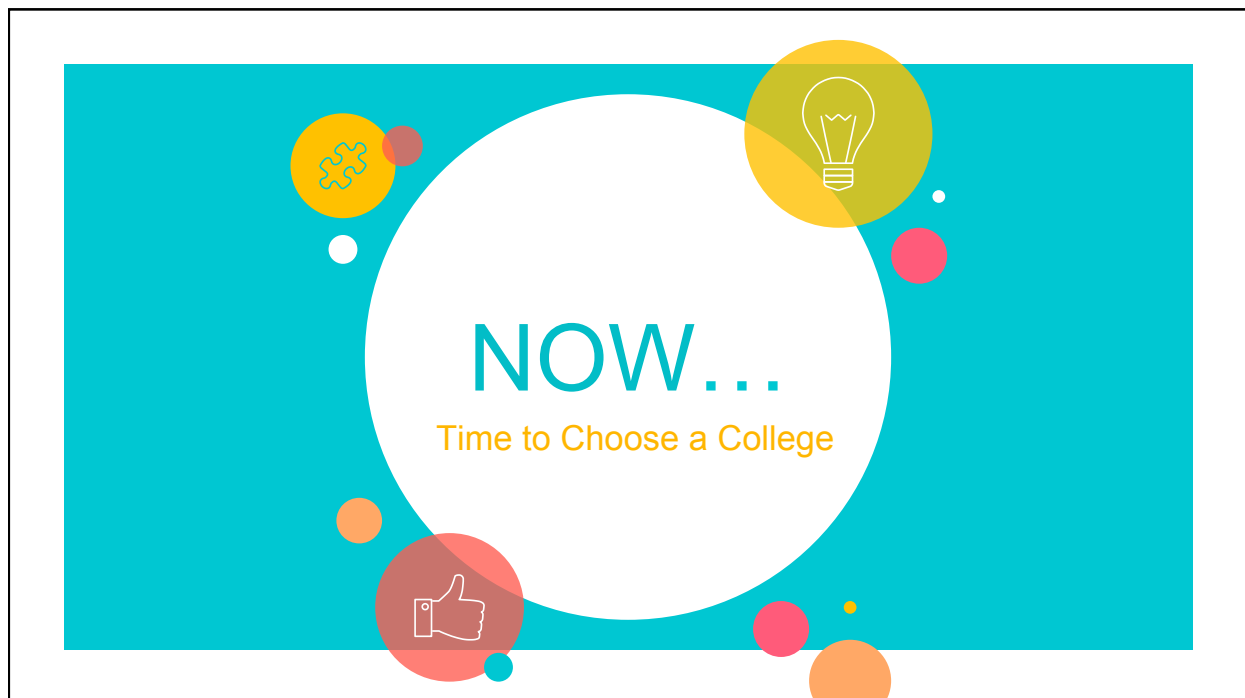
39

Session 4

Assign Homework:

- Create a Student/Parent Contract

The slide features a light blue background with a large teal circle on the left containing the text 'Session 4'. To the right, the title 'Assign Homework:' is followed by a bulleted list item '○ Create a Student/Parent Contract'. The slide is decorated with various icons: a lightbulb in a yellow circle, a thumbs up in a teal circle, and a puzzle piece in a yellow circle, along with several smaller colored circles (red, orange, yellow, pink) scattered around the edges.



NOW...

Time to Choose a College

The slide has a teal background with a large white circle in the center. Inside the circle, the text 'NOW...' is written in teal, and 'Time to Choose a College' is written in orange below it. The slide is decorated with various icons: a lightbulb in a yellow circle, a thumbs up in a red circle, and a puzzle piece in a yellow circle, along with several smaller colored circles (red, orange, yellow, pink) scattered around the edges.



Session 5

Start a College List Based On:

- Intended Major
- What You Can Afford
- ROI

41



Session 5

Things to Consider:

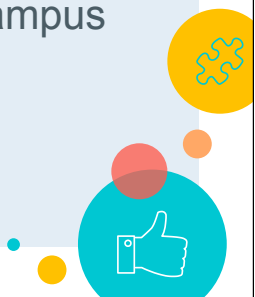
- Graduation Rate
- Employment Statistics and Placement Rate
- Average Debt
- Average Class Size
- Special Assistance

42



Session 5

Questions to Ask Yourself:

- Will This College Meet My Career Goals
 - Will I Be Successful at This College
 - Do I Feel Comfortable on Campus
 - Can I Afford This College
 - Is This College a “Fit”
- 

43



Session 5

Assign Homework:

Build a college list

-Big Future

-College Raptor

At Least Five Colleges



44



45

Session 6

Family Presentations